



nsw family services inc

www.nswfamilyservices.asn.au

Strengthening Families
Strengthening NSW

Better Early Childhood Outcomes Through Working Together



nsw family services inc

www.nswfamilyservices.asn.au

Strengthening Families
Strengthening NSW

The project aimed to increase links and relationships between early childhood and family support services and to equip early childhood professionals with the skills to address and discuss challenges that parents might be experiencing.



nsw family services inc

www.nswfamilyservices.asn.au

Strengthening Families
Strengthening NSW

Project Outcomes

- **Increase skills in early childhood professionals to actively refer and assist families to access the help they need.**
- **Increase in knowledge about the importance of effective collaboration to enhance children's learning and wellbeing**
- **Increase in referrals occurring between early childhood and family support centres**
- **Increase in confidence for early childhood professionals to discuss with families the challenging issues that impact on a child's development.**



nsw family services inc

www.nswfamilyservices.asn.au

Strengthening Families
Strengthening NSW

Methodology & deliverables

- Survey Monkey
- Development of partnerships
- Working Group formed
- Forums
- Training
- Development of online screener
- Finale forum



nsw family services inc

www.nswfamilyservices.asn.au

Strengthening Families
Strengthening NSW

Partners

- ❑ Penrith council
- ❑ NSW Family Services (FamS)
- ❑ FamS Regional Rep
- ❑ FamS members in Penrith
- ❑ Penrith Council Directors and Early Childhood Educators



- ❑ **Consultation:** E.g. What do you think would help your service to work more collaboratively with other agencies?
- ❑ **Information:** Partnerships
- ❑ **Scenarios:** Real life scenarios experienced by early childhood professionals
- ❑ **Speed Networking:** between family support and early childhood workers



nsw family services inc

www.nswfamilyservices.asn.au

Strengthening Families
Strengthening NSW

Training

Linking Families to services training

developed and facilitated by

Bronwen Elliot



nsw family services inc

www.nswfamilyservices.asn.au

Strengthening Families
Strengthening NSW

Development of online screener

- **Idea emerged from the consultation at forums**



nsw family services inc

www.nswfamilyservices.asn.au

Strengthening Families
Strengthening NSW

Finale

- ❑ **Feedback results**
- ❑ **Playback theatre**
- ❑ **DVD**
- ❑ **Where to from here**



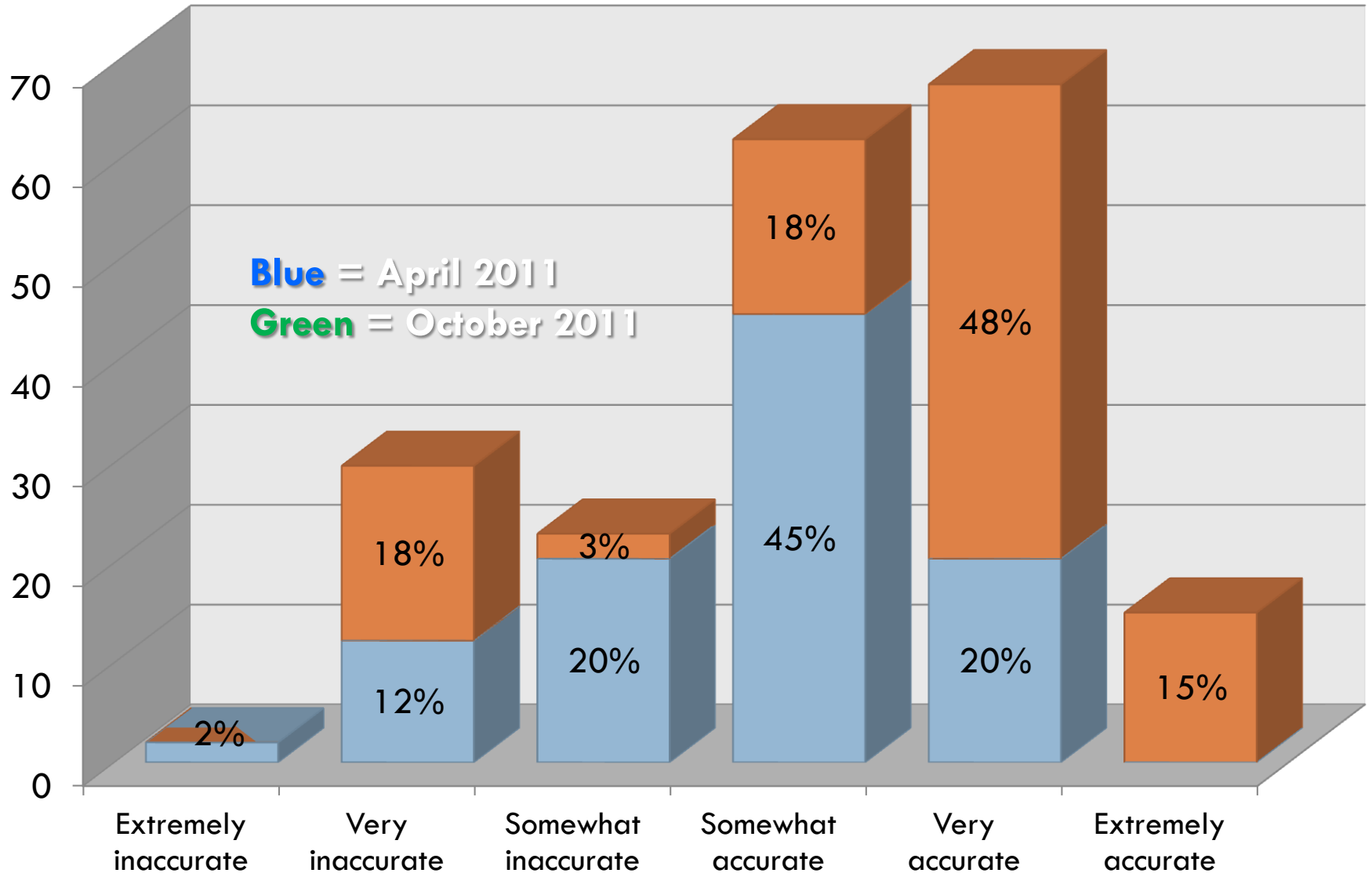
nsw family services inc

www.nswfamilyservices.asn.au

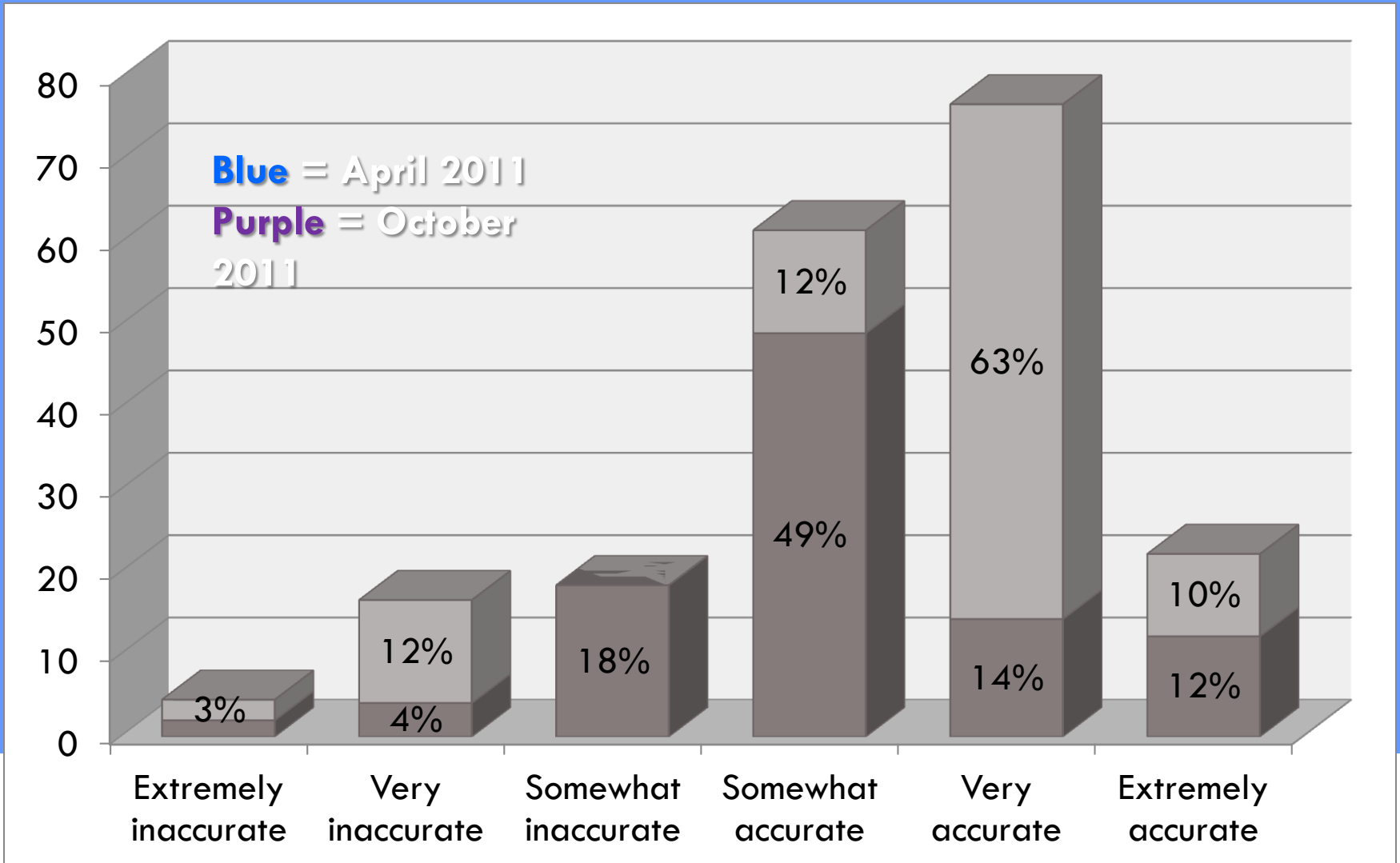
Strengthening Families
Strengthening NSW

Online Survey Results

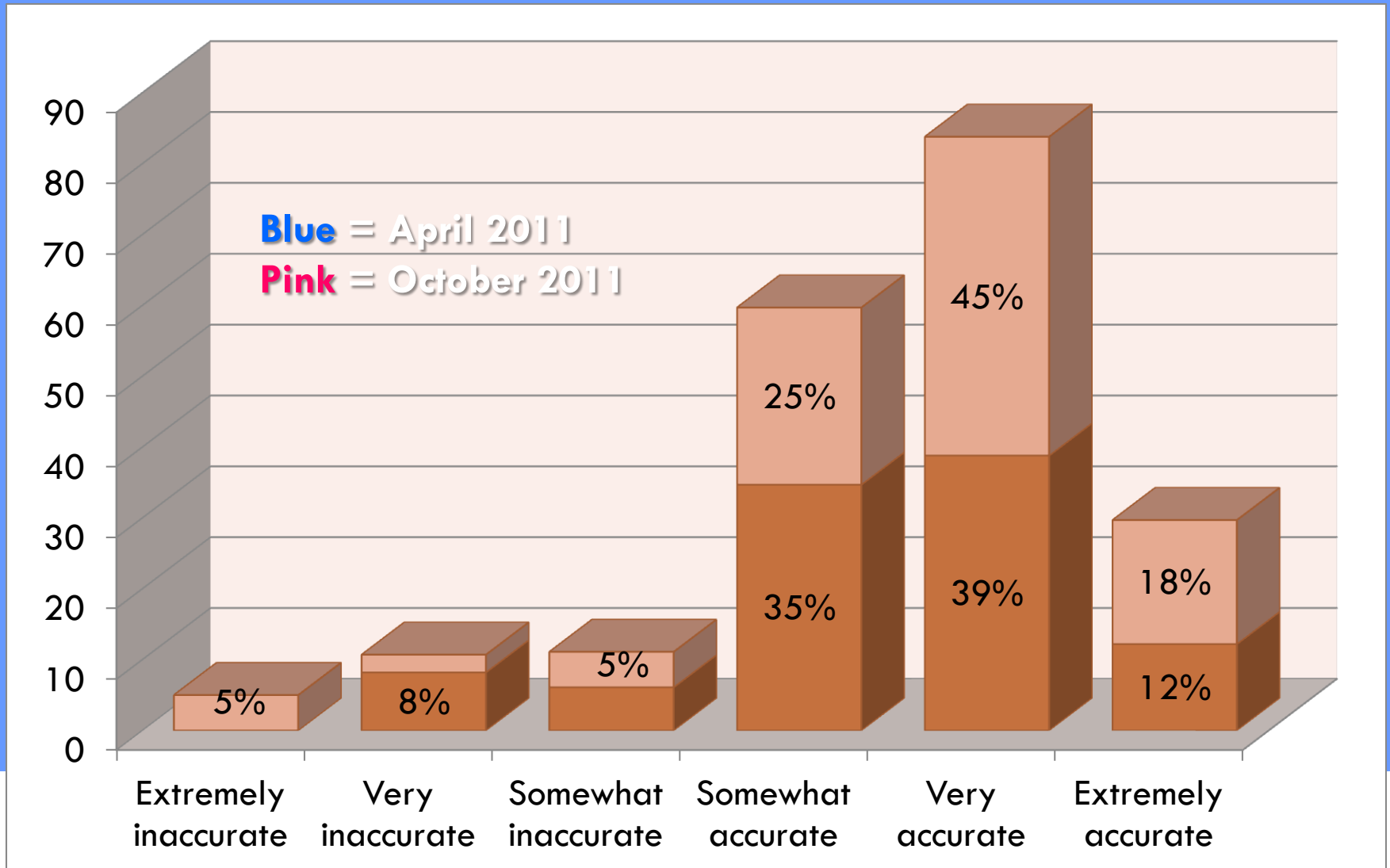
Question 1: I feel confident to refer families to a Family Support Service when families may need help. How accurately does this statement describe you?



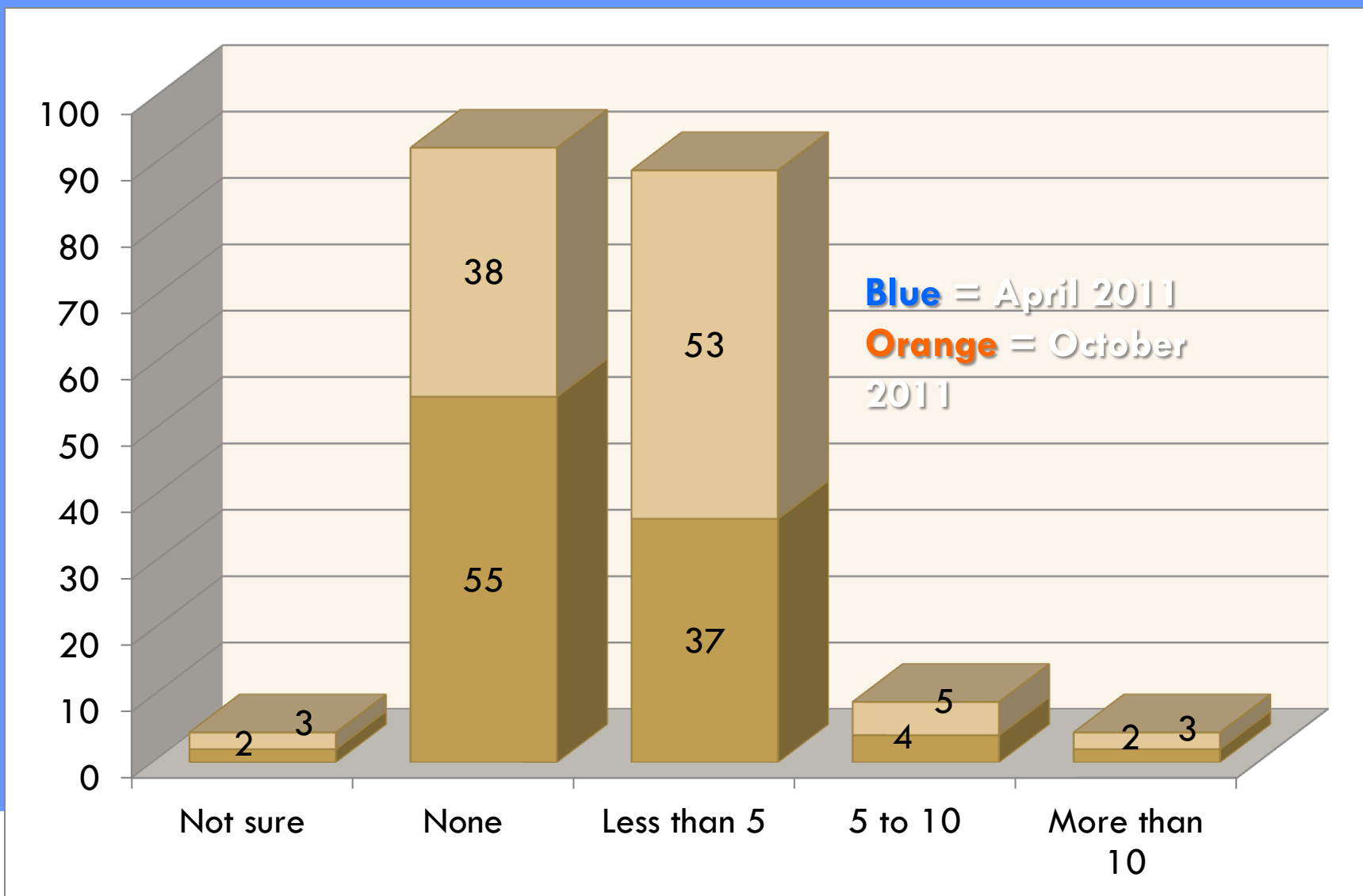
Question 2: I am knowledgeable about the different ways agencies can work together. How accurately does this statement describe you?



Question 3: I feel confident to talk to parents about challenging issues that may impact on their children's development.



Question 4: How many referrals approximately have you made to a Family Support Service in the past five months?





nsw family services inc

www.nswfamilyservices.asn.au

Strengthening Families
Strengthening NSW

Recommendations

- ❑ **Ongoing training and support**
- ❑ **Opportunities to network and share resources** and ideas rather than just information share
- ❑ **Ongoing use of RBA** – using data to inform practice, evaluation, reflection
- ❑ **Using population results** and indicators supports shared responsibility. Eg Child wellbeing is the responsibility of both Family Support and Early childhood services